



# ArchiveOne<sup>®</sup> | EXPRESS

Whether it's to improve the capacity and performance of Microsoft<sup>®</sup> Exchange Servers or meet compliance and eDiscovery requirements, email archiving is vital for any organization.

Built for the small and medium enterprise (SME), ArchiveOne Express utilizes the same core architecture and sophistication as C2C's fifth generation ArchiveOne Enterprise email archiving solution.

ArchiveOne Express is uniquely refined for organizations that simply wish to archive everything versus develop an intricate policy library. Configuration is wizard-driven and with a few clicks of a mouse, ArchiveOne Express will deliver the sophisticated analytical search and email storage management that smaller businesses require. Additionally, if users have scattered 'email databases' of their own in PSTs, ArchiveOne Express will discover and consolidate those files to the central archive without end user involvement.

## Features and benefits include:

- Dramatically improves the performance of a Microsoft Exchange Server
- Takes less than 15 minutes to install with wizard-driven process
- "Zero-Training Required"<sup>™</sup> for users
- Offers advanced PST discovery & management
- Manages legal risks & compliance demands
- Fast, integrated search and eDiscovery
- No separate database to administer
- User access compatible with Apple<sup>®</sup> iPhone<sup>™</sup> and RIM<sup>®</sup> BlackBerry<sup>®</sup>
- ArchiveOne CloudDR<sup>™</sup> option for automated cloud-based disaster recovery



## Improve end user & Microsoft Exchange server performance

Using your own email policy criteria, ArchiveOne Express selects and archives email from mailboxes, PST files and public folders automatically and invisibly. ArchiveOne Express maintains the integrity of archived messages seamlessly and provides users with direct access to their own archived information via a simple click on the item in their existing email client.

Email users gain the impression of an unlimited mailbox and can just keep on saving their messages while, in the background, ArchiveOne Express moves older or larger items onto lower cost storage, removing the hassle of mailbox maintenance such as choosing email for deletion.

Backup and restore times for the live data stores are improved immediately by reducing the amount of data held on the email server. Service Level Agreements on critical email system restoration times are improved since the total size of the live email database is reduced and under control.

## Zero-user training required design

ArchiveOne Express has been designed to offer end users a transparent yet enhanced experience of their existing tools without additional training. End users do not need to change their behavior, require no training and their data remains fully searchable and instantly accessible at any time, even for remote users on mobile devices.



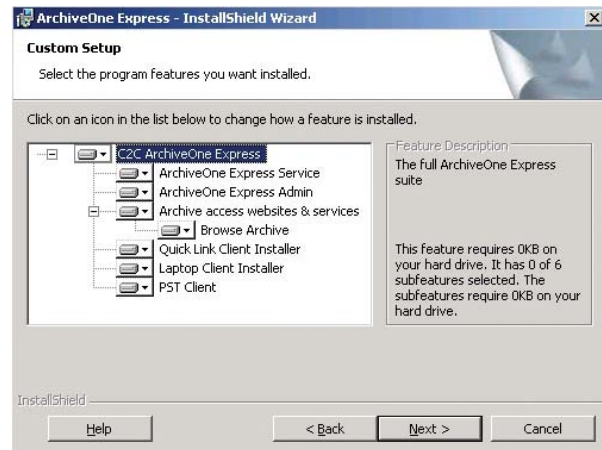
## Control PST files with advanced discovery & management

ArchiveOne Express offers best in class PST file discovery, even on laptops with or without Outlook® running. It makes it easy to understand the scope of your PST file exposure by discovering all PST files and associated information – size, owner, location and more, and allows you to manage them the way you want. For example, you can archive data directly from PST files, by-passing Exchange and user mailboxes. From just simple discovery to discovery with intelligent actions and through to full migration, you are in total control.

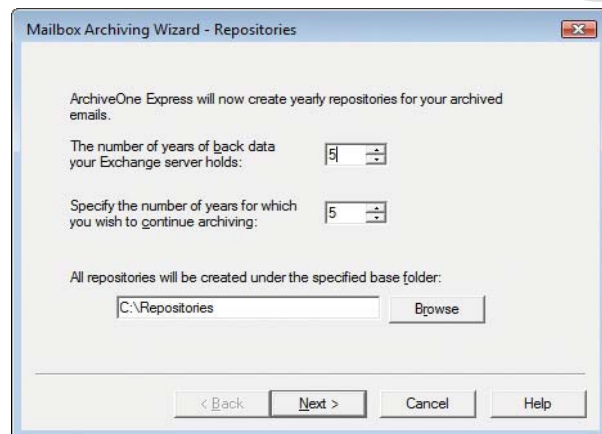
Even though PST file processing may involve archiving all data, ArchiveOne Express fully supports the ability to 'live' with existing PST files. Without archiving, you can search email content, report on size statistics, or even transfer email back to the server.

## A wizard-driven, easy-to-install package

As easy as 1-2-3, ArchiveOne Express is designed to install in under 15 minutes:



### 1. Run installation



### 2. Configuration Wizard



### 3. Begin archiving in 15 minutes

## Manage legal risks & compliance demands

To help you meet regulatory requirements such as Sarbanes-Oxley, ISO, HIPAA, Basel II and others, ArchiveOne Express can extract and store a copy of every email sent or received. By archiving internal and external email to secure, indexed repositories, you can ensure you will be able to find critical message content rapidly and with full, demonstrable records of every email transaction suitable for audit requirements.

## Advanced eDiscovery Features

Taking searching beyond simple date range, subject and recipient criteria, ArchiveOne Express provides an unmatched ability to discover archived email and live Exchange data at a forensic level.

Simple and advanced search options, including Boolean and proximity, keep all archived data fully searchable and instantly accessible to the end user.

End users can also browse their archived data in an Outlook folder called 'Browse Archive'. By presenting archived data in folder hierarchy, end user content remains completely transparent.

Legal Hold capability and built in Bates Stamping will help administrators prepare for legal handover and trial readiness.

## Manage your email data exactly the way you want to

ArchiveOne Express can do much more than just archive email; it enables you to list, archive, delete, and unarchive email data. You can process pre or post archiving, making it possible to remove unnecessary email data and discovered PSTs instead of placing them into the archives, reducing ongoing storage management costs and "data fingerprints" risks. For example, processing at hundreds of items per second, it is easy to remove all email with MP3 files attached without having to place these items into the archive first.

## Single search for archived data, the web and corporate data stores

ArchiveOne Express provides a Federated Search interface that allows extensive web based integration with external or internal search tools. One search term will return results from multiple locations such as the archived data store, the internet, file shares, Microsoft SharePoint® sites and other corporate data stores.

## Access archived email from anywhere including iPhone or Blackberry

ArchiveOne Express provides laptop users with access to archived email even when no access to the corporate network or internet is available. ArchiveOne Express provides the same full access to the archived messages and search tools to users of Outlook Web Access (OWA) as it does to Outlook mail client users without any additional software. Full support is provided for Windows Mobile® 5 and 6 devices, iPhone and Blackberry and all major browsers including Internet Explorer®, Firefox®, and Safari®.

## No database dependency

ArchiveOne Express has embedded data management technology and does not require the use of an external database (such as SQL Server®) therefore reducing costs and complexity. This allows incredible simplicity in terms of administration, implementation and ongoing management. It also reduces the administration, operation and maintenance costs while removing a potential point of failure.

## Cloud-based disaster recovery

The ArchiveOne CloudDR option offers a remote automated disaster recovery service that connects users to offsite storage over a regular Internet connection to help defend against a local outage or due to natural disasters, data corruption, or sabotage.

ArchiveOne CloudDR transmits data easily and securely, without expensive software, hardware or high-end connectivity, and is more reliable and affordable than regularly shipping tapes offsite.

## Availability

ArchiveOne Express supports Microsoft Exchange 2000, 2003 and 2007 and is available through C2C accredited resellers worldwide.



Selecting your ArchiveOne email archiving solution		Express	Enterprise
Platform	Maximum number of users / mailboxes	200	Unlimited
	Email archiving for Microsoft Exchange Servers	✓	✓
	Email archiving for IBM Lotus Domino Servers		✓
	File archiving for Microsoft File Servers		✓
	SharePoint archiving for Microsoft SharePoint Servers		✓
Archiving & Data Management	Advanced PST file management and discovery	✓	✓
	Selects and archives email from mailboxes, PST files and public folders	✓	✓
	Data selection based on up to 13 criteria	✓	
	Unlimited data selection criteria (extendable to any metadata property)		✓
	Intelligent Actions: List, Archive, Delete, Un-archive	✓	✓
	Intelligent Actions can include live Exchange data	✓	✓
	Advanced Intelligent Actions: Classify, Move, Copy, Export, custom extendable		✓
	Advanced Intelligent Actions can include live Exchange data		✓
	Number of archive repositories	1/Year	Unlimited
	Number of archiving policies	50	Unlimited
	Daily archive scheduling	✓	✓
	Advanced archive scheduling (policy driven)		✓
	eDiscovery	End user search	✓
Browse Archive feature displays folder hierarchy of archived data		✓	✓
Advanced end user and administrator search (incl. Boolean and proximity)		✓	✓
Bates Stamping for legal handover		✓	✓
Federated Search incl. Microsoft Search Server & Google Search Appliance		✓	✓
Compliance	Journal capture / archiving	✓	✓
	Retention management	✓	✓
	Legal Hold	✓	✓
	Advanced, multi-dimensional Legal Hold		✓
	Advanced, multi-dimensional Tagging		✓
	Automated Compliance Workflow		✓
	Customizable administration roles and permissions		✓
Ease of use	Offline archive support	✓	✓
	Outlook Web Access (OWA) integration	✓	✓
	BlackBerry/ iPhone/Windows Mobile user support	✓	✓
	Embedded data management (no dependency on Microsoft SQL Server)	✓	✓
	ArchiveOne CloudDR option for automated cloud-based disaster recovery	✓	✓

Visit [www.c2c.com/ESG](http://www.c2c.com/ESG)



Brian Babineau, Senior Analyst at Enterprise Strategy Group (ESG) explains how ArchiveOne Express is uniquely refined for the SME, including:

- Takes less than 15 minutes to install with wizard-driven process
- Simplified archiving policies based on age or mailbox size
- "Zero-Training Required" philosophy employed in design
- Attractive price point for a robust SME email archive platform

Try it today!  
Free 30 day trial

How to request your free 30 day trial:

1. Contact your local C2C accredited reseller or C2C office to discuss your requirements
2. Visit [www.c2c.com](http://www.c2c.com) to chat online with one of our operators or register for your trial download

**Microsoft**  
GOLD CERTIFIED  
Partner

ISV/Software Solutions

## About C2C

C2C has earned the trust of its four million software users since 1992 by consistently delivering high-value, dependable core messaging system enhancements. Microsoft Exchange, SharePoint, and Windows® File Server together with IBM® Lotus® Domino® form the heart of our commercial and governmental customers' businesses worldwide.

C2C's ArchiveOne product family is the trusted choice for their email and file archiving, eDiscovery, compliance management, legal forensics and storage management tools to enhance these platforms.



### Americas:

1 Federal Street, Springfield,  
MA 01105-1199, USA  
Tel: 508-870-2205  
Fax: 413-739-4980

### Europe & RoW:

6 Richfield Place, Reading,  
Berkshire, RG1 8EQ, UK  
Tel: +44 (0)118 951 1211  
Fax: +44 (0)118 951 1111

Email: [info@c2c.com](mailto:info@c2c.com)

Website: [www.c2c.com](http://www.c2c.com)